



# Pro Reef **S2** Product Catalogue

Scan to hit our website



# Pro Reef S2



The CADE Pro Reef Series 2 range of customisable Mini Reef Aquariums is an intelligently designed foundation that enables the aquarist *to build a truly personalised Reef Aquarium system without limitation.*



Pro Reef 600 S2  
600x700x600h

Pro Reef 900 S2  
900x700x600h

Pro Reef 1200 S2  
1200x700x600h

Pro Reef 1500 S2  
1500x700x600h

Pro Reef 1800 S2  
1800x700x600h

## Pro Reef S2 - Tank

The CADE Pro Reef Tank is a rimless open top design boasting super high clarity Opti-Clear glass with flat polished edges constructed using the highest quality German Whacker silicone. Silicone is robotically applied resulting in perfect gaps and a razor clean minimalist finish. All Pro Reef tanks measure 600mm high and 700mm wide with space split between 600mm of inhabitable tank width and the remaining 100mm allocated to the 'Backdrop Water Management System'. This neatly concealed system is home for 2 important functions, the Weir and very large capacity ATO Reservoirs. This internal rear panel is constructed from highly durable double laminated colour impregnated black glass and each area is accessible from the top via side flip covers and a slide/flip central cover specifically designed to accommodate tank mounted lighting brackets. The CADE PR-S2 'Weir' is unique in that it offers both surface and low water column intakes enabling superior uptake of heavier suspended solids that fail to reach regular surface intakes on regular Weirs. Having an extra intake also serves as an emergency back up should one intake become blocked.

## Pro Reef S2 - Cabinet

CADE Pro Reef S2 cabinets are now all 900mm and require no assembly whatsoever. We deliver them to you completely assembled (sump installed) within a solid plywood box. Simply open the box, position the cabinet, rest the tank on top and screw your plumbing together. It's that simple! The Pro Reef S2 cabinet has both front and side doors with hinges and magnetic latches cleverly hidden within the frame work. The right side cabinet door accesses the Controller Management area with power on/off switches displayed for easy access. This area is specifically designed for mounting electrical controllers keeping them neat and safely away from salt water. The PR Series 2 models now include a Chiller / Accessories space on the right side of the cabinet on models PR2-900 and up. The 700mm depth provides enough space for both a chiller and other items such as dosing vessels etc. Above this a shelf is also provided for items such as a dosing pump and this area also provides space to neatly manage power cables that connect to the internal plugs on the Power Distribution Unit. There are 8x plugs included on the PR2-600 and 16x plugs on PR2-900 through to PR2-1800. The cabinet also has a foam padding pre-installed to protect the tank and we've also added industrial grade adjustable caster feet for levelling out your Aquarium on uneven floors. CADE Cabinets are constructed using materials that are 100% waterproof. We are all aware that wood, metal and salt water do not equate to a durable hard wearing cabinet and because water spills are inevitable in our hobby we've constructed our cabinets using completely waterproof materials aluminum, glass and industrial plastic. These materials will never swell, rust or deteriorate. Even the magnetic door closes are hidden inside the framework to prevent them corroding. The cabinet colour is anodized to the aluminum frame which provides a perfect hardwearing finish and is also unaffected by corrosive salt water. Rest assured that the CADE PR-S2 cabinet will last you a lifetime.

## Pro Reef S2 - Filtration & Plumbing

CADE Pro Reef S2 Sump filtration is a uniquely designed system that maximises space and provides endless versatility no matter what your filtration preferences are. Every model is equipped with pre-filtration sock/s a large Protein Skimmer / Reactor chamber, a Bio / Chemical Media Chamber and a Return Pump Chamber which also houses the ATO refill float valve that connects to the water storage reservoir in the rear of the tank. A handy inclusion to the PR-S2 sumps are individually removable 10x10x20h (cm) media baskets which can be used for any form of Biological or Chemical filter media. Filter baskets offset the need for additional media reactors such as a Carbon Reactor which ultimately saves space and additional expenses. A Macro Algae Refugium Chamber is included on models PR2-1200, PR2-1500 and PR2-1800. This feature is optional and the acrylic panel is removable if desired. CADE Pro Reef Plumbing is a pre-fabricated screw fit design that installs in minutes and requires no silicone. The plumbing starts in the weir with 2x down flow pipes (main drain & emergency). The main is fitted with a super fine adjustable gate valve (industry standard) for silencing the weir. The gate valve also enables adjustment of the Aquariums displays water height between the lower main drain and the taller emergency drain. Return flow to the Aquarium is via a 1" PVC pipe that is neatly concealed within the ATO reservoir chamber and feeds back into the tank via a directional adjustment outlet. The entire system is extremely neat and is absolutely silent during operation.

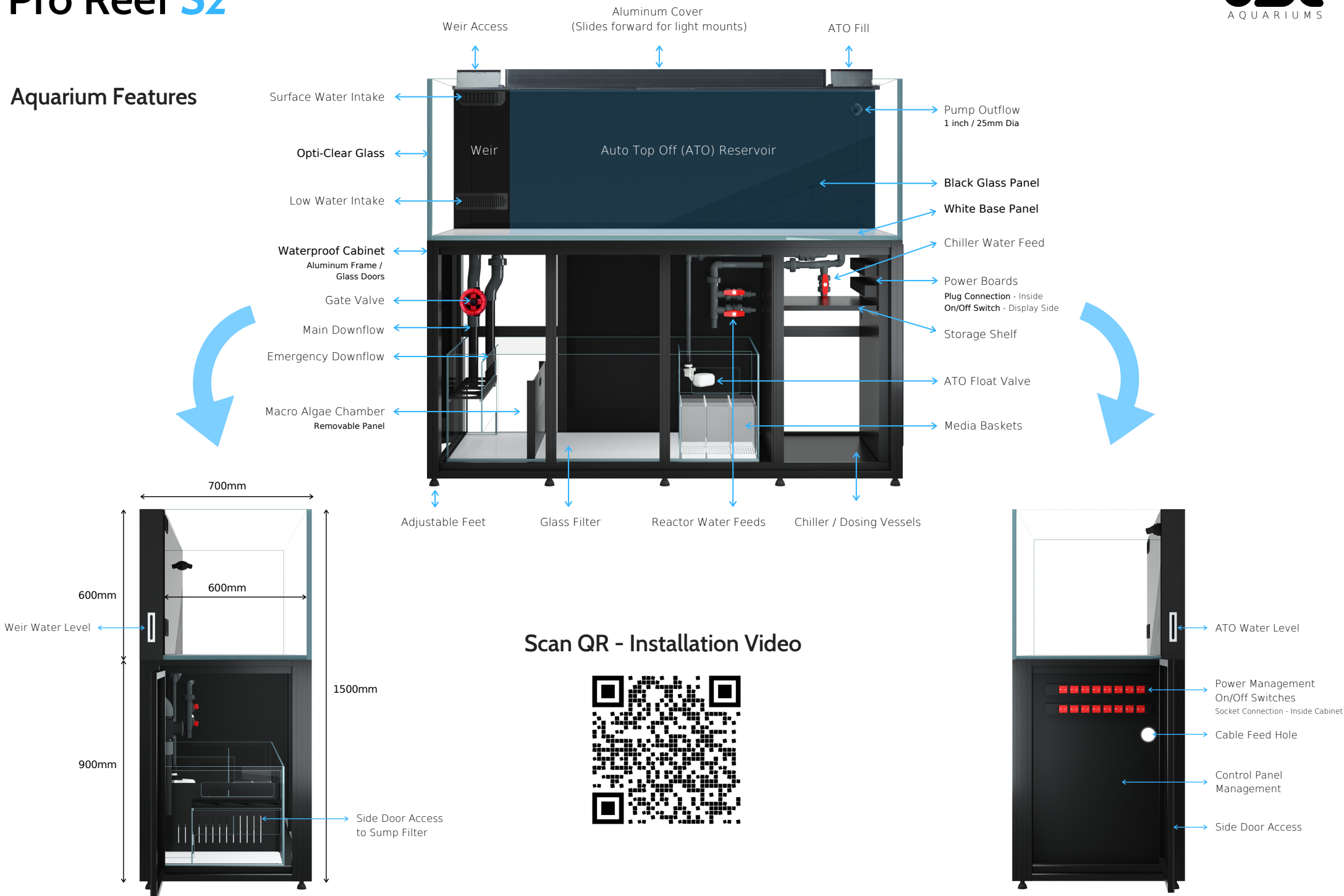
## System Specifications

Features	PR2-600	PR2-900	PR2-1200	PR2-1500	PR2-1800
Tank LxWxH (mm)	600x700x600	900x700x600	1200x700x600	1500x700x600	1800x700x600
Cabinet LxWxH (mm)	600x700x900	900x700x900	1200x700x900	1500x700x900	1800x700x900
Sump LxWxH (mm)	430x570x410	430x570x410	700x570x410	890x570x410	1170x570x410
Tank Vol. Inhabitable	216L / 57G	324L / 85.6G	432L / 114G	540L / 143G	648L / 171G
Sump Operating Vol.	49L / 13G	49L / 13G	80L / 21G	100L / 26.4G	134L / 35.4G
System Total Capacity	266L / 70G	373L / 98.5G	512L / 135G	640L / 169G	782L / 207G
Sump Water Level	21cm	21cm	21cm	21cm	21cm
ATO Capacity	13L / 3.4G	24L / 6.3G	35L / 9.2G	46L / 12G	57L / 15G
Glass Thickness	<b>10mm</b>	<b>12mm</b>	<b>12mm</b>	<b>15mm</b>	<b>19mm</b>
Glass Type	Opti Clear (All Panels)	Opti Clear (All Panels)	Opti Clear (All Panels)	Opti Clear (All Panels)	Opti Clear (All Panels)
Twin Intake Weir	Yes	Yes	Yes	Yes	Yes
White Glass Base	Yes	Yes	Yes	Yes	Yes
Gate Valve (Sinking)	Yes	Yes	Yes	Yes	Yes
Emergency Drain	Yes	Yes	Yes	Yes	Yes
Waterproof Cabinet	Yes	Yes	Yes	Yes	Yes
Chiller Space LxWxH	N/A	296x610x580	321x610x580	408x610x580	365x610x580
Power Plug (Qty)	8	16	16	16	16
Side Controller Panel	Yes	Yes	Yes	Yes	Yes
Accessory Shelf	Yes	Yes	Yes	Yes	Yes
Adjustable Caster Feet	Yes	Yes	Yes	Yes	Yes
Filter Sock Qty	1	1	2	4	4
Prefabricated Plumbing	Yes	Yes	Yes	Yes	Yes
Reactor Feed (Qty)	1	2	2	2	2
Chiller Feed Tap (Qty)	1	1	1	1	1
Macro Algae Chamber	No	No	Yes	Yes	Yes
Filter Basket (Qty)	3	3	4	9	9

# Pro Reef S2



## Aquarium Features

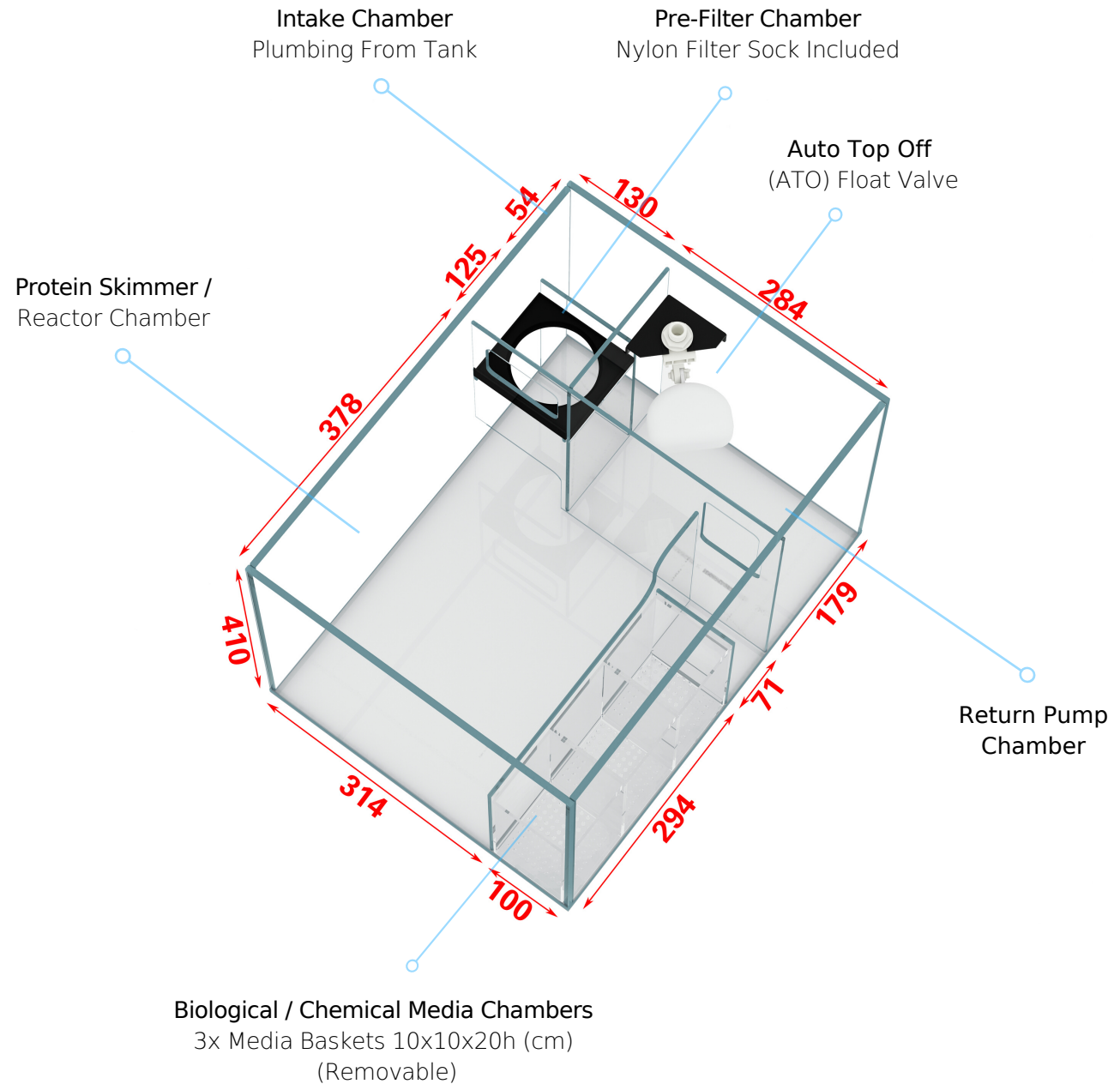




## Filtration Specifications

### Pro Reef 600 & 900 /S2

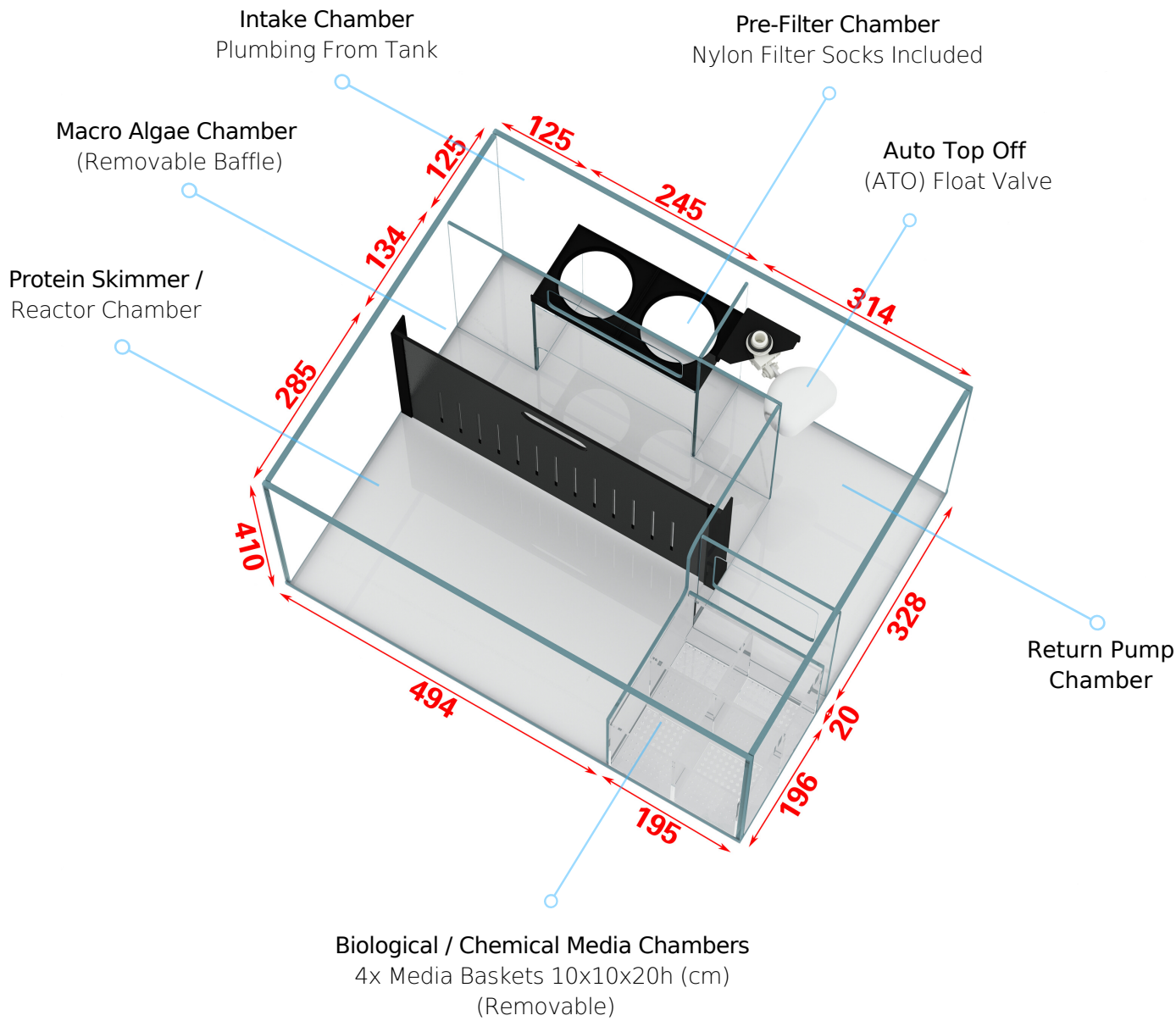
Sump Height: 410mm  
Operating Water Height: 210mm  
Operating Volume: 49L / 13G  
Total Volume: 94L / 25G



Filtration Specifications

Pro Reef 1200 /S2

Sump Height: 410mm  
Operating Water Height: 210mm  
Operating Volume: 80L / 21G  
Total Volume: 156L / 41G



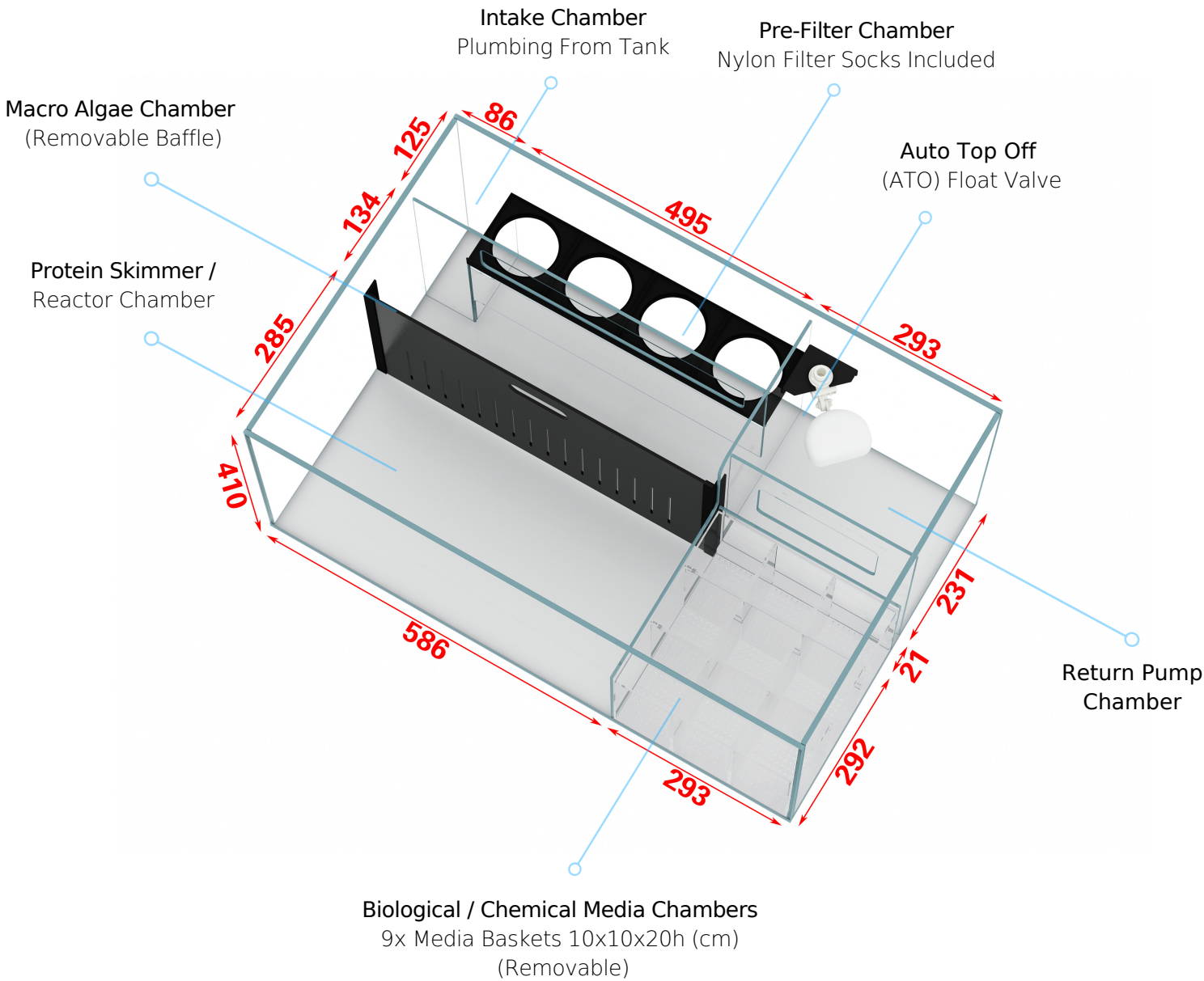
# Pro Reef S2



## Filtration Specifications

### Pro Reef 1500 /S2

Sump Height: 410mm  
Operating Water Height: 210mm  
Operating Volume: 100L / 26G  
Total Volume: 196L / 52G



# Pro Reef S2



## Filtration Specifications

### Pro Reef 1800 /S2

Sump Height: 410mm  
Operating Water Height: 210mm  
Operating Volume: 134L / 35G  
Total Volume: 261L / 69G

