

# CADE

## CABINET ASSEMBLY INSTRUCTIONS

CB1200 CB1500 CB1800



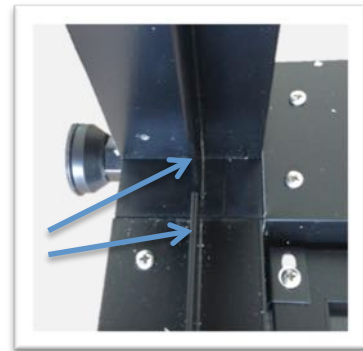
### **Tools required for installation:**

- Cordless drill fitted with a phillips head drill bit.
- Rubber mallet

1. Open the cabinet box and place the top of the box with protective foam on a clean even surface. This will be where the cabinet assembly will take place.
2. Place the cabinet front panel on the protective foam face down as illustrated below.



3. Locate the 4x transverse bars and connect to the industrial plastic connectors located at each corner of the front panel as pictured below. The bars require hammering using a rubber mallet to firmly fix in place. *Take note that each transverse bar has a metal strip. This strip needs to line up between the front panel and the bar as pointed out below.*



4. Locate and open the screw & accessory package. Fix transverse bars to front panel using a cordless screwdriver and phillips head screws provided. Each transverse bar has a pre-drilled hole for your convenience.

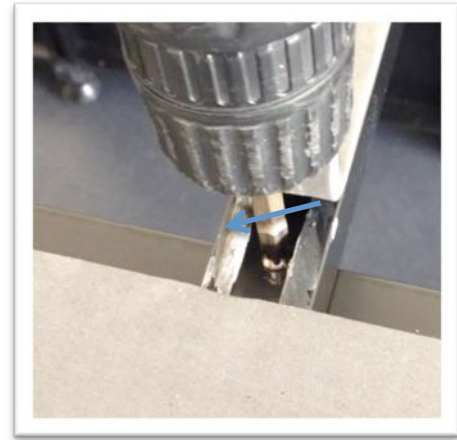


5. Position the rear panel on top of the transverse bars as shown in the image below. Using a rubber mallet hammer the rear panels plastic connectors to the transverse bars. Fix the rear panel to the transverse bars using 4x screws as per step 4.

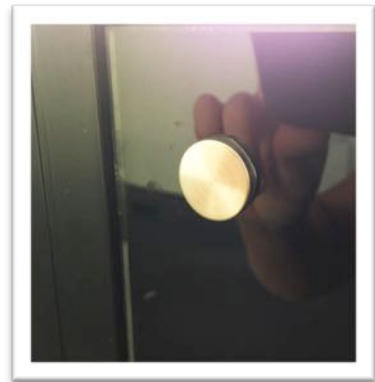
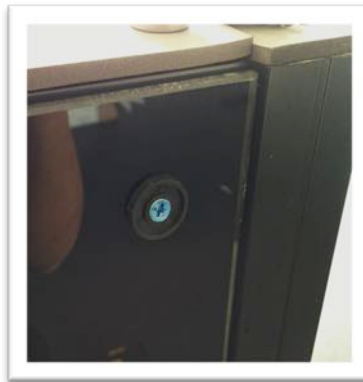


6. CADE cabinets have adjustable caster feet for leveling on uneven floors. Please tighten all casters in a clockwise direction. Re-adjustment will not be required unless your surface is determined as uneven.

7. Position the cabinet upstanding on its caster feet. Locate the upper cross support bars and position them on the cabinet's support channels as pictured below. Note that both the support channel and the cross support bar has pre-drilled holes. Fix support bars using the screws supplied. Peel back the foam pad on the bar and affix screw through the support bar into the frame.

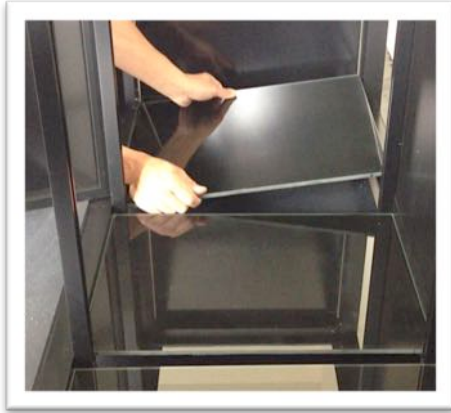


8. Carefully unpack the cabinet's glass side panels. Each panel has 4 holes drilled through the glass. They fix to the cabinet using screws supplied and plastic support washers (as pictured). Carefully position the glass to the cabinet and screw into position making sure to take special care to support the glass at the base. Finally attach the stainless steel screw cover to the plastic support washers by pressing them in place.



9. Place your cabinet in its final resting position. Your CADE cabinet is now ready for installation of your CADE tank and final leveling adjustments. Place tank directly onto cabinet. CADE Cabinets are pre-fitted with protective foam to their upper surfaces. No other protective foam is required.
10. Use the supplied CADE spirit level to check if the tank is level in its final resting position. If tank is not level proceed to adjust the caster feet accordingly until tank is level. Make sure that every caster foot is firm on the ground.

11. Unpack the internal glass panels and carefully position in the cabinet as shown below. Place plastic strips supplied between each glass panels.



12. Peel off the protective film coverings.

**Congratulations, your installation is complete.**

If you have any questions or you would like a digital copy of this manual please contact Aquascape Design.  
Ph (03) 9307 9843 or email [sales@aquascapedesign.com.au](mailto:sales@aquascapedesign.com.au)